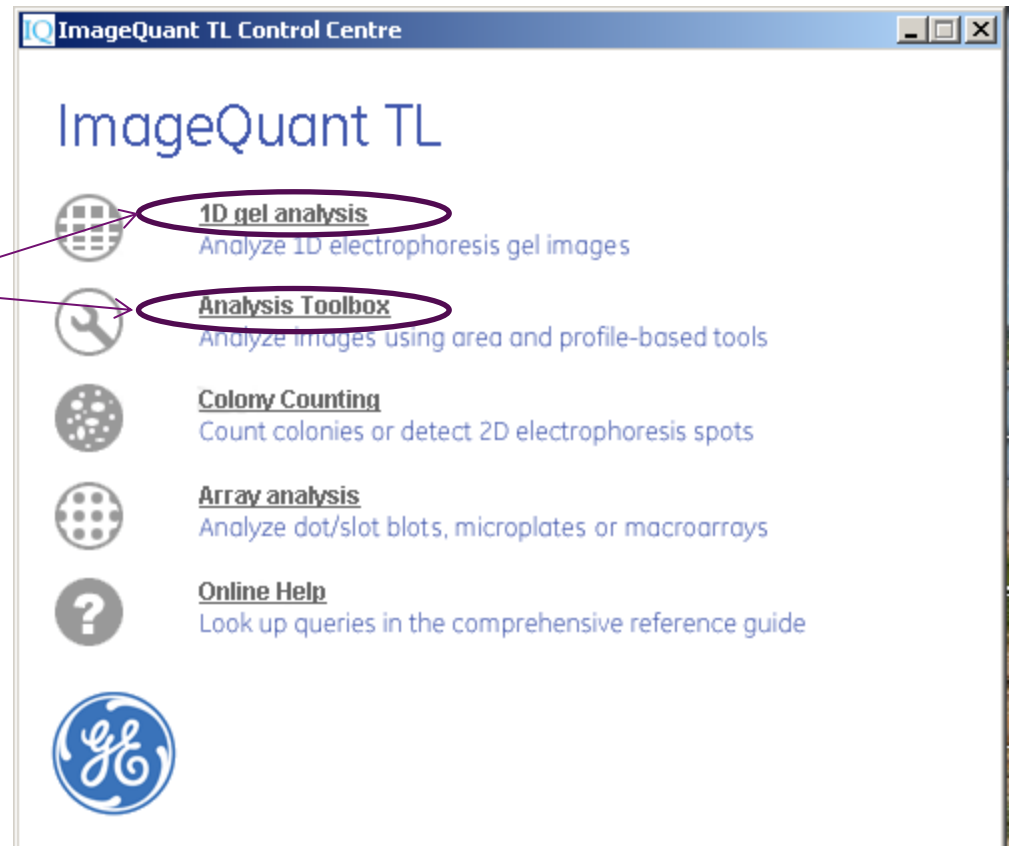


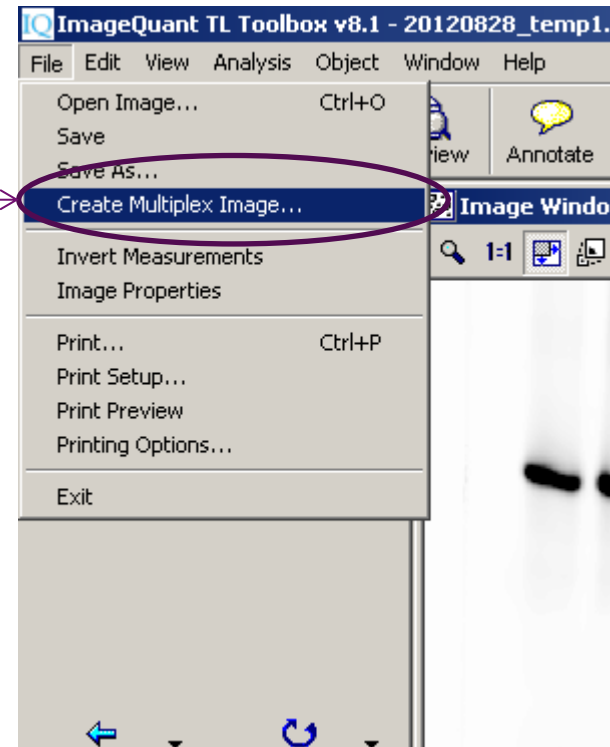
Overlay of images with IQ TL version 8.0

Open "1D gel analysis" or
"analysis toolbox"

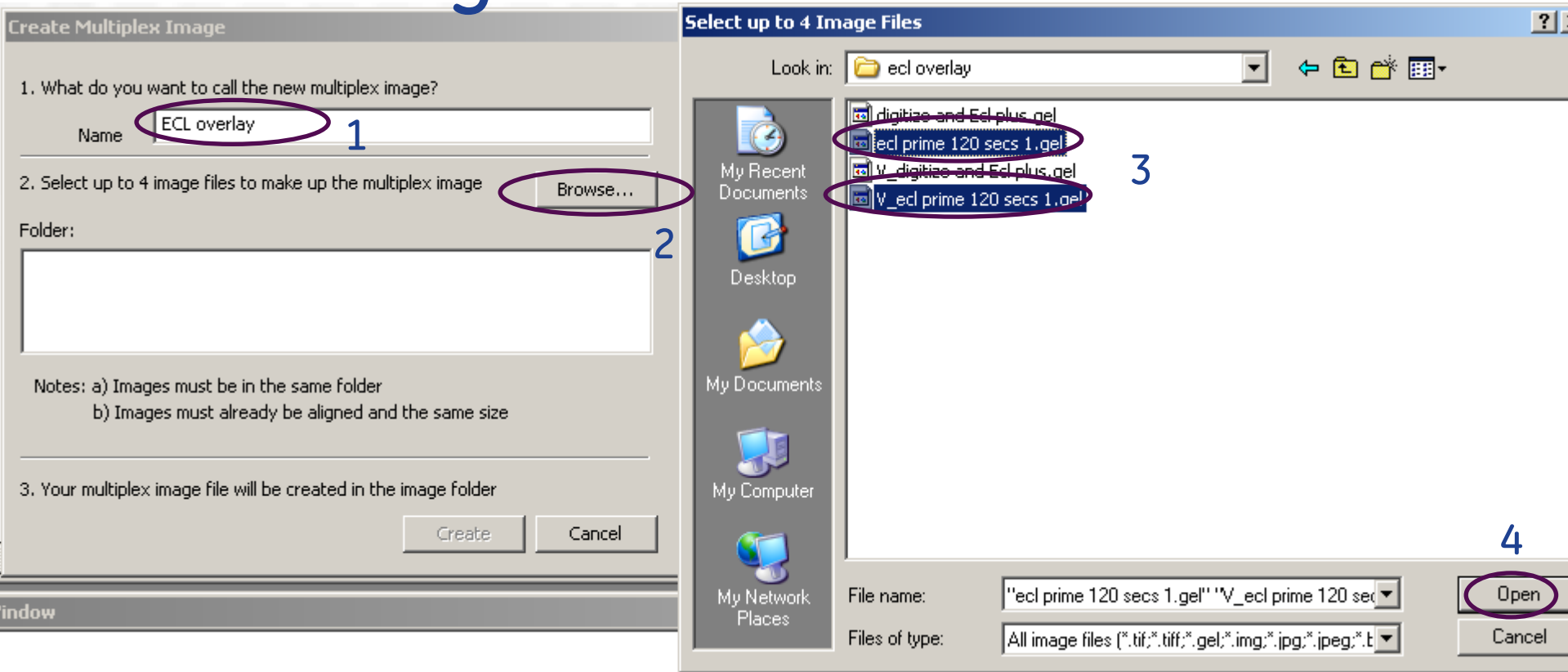


Create Multiplex image

From dropdown select
“create multiplex image”



Select images



Step 1 – name new file

Step 2 – browse for location of images to overlay

Step 3 - select associated digitized images

Step 4 – select “open”

Create...

Create Multiplex Image

1. What do you want to call the new multiplex image?

Name

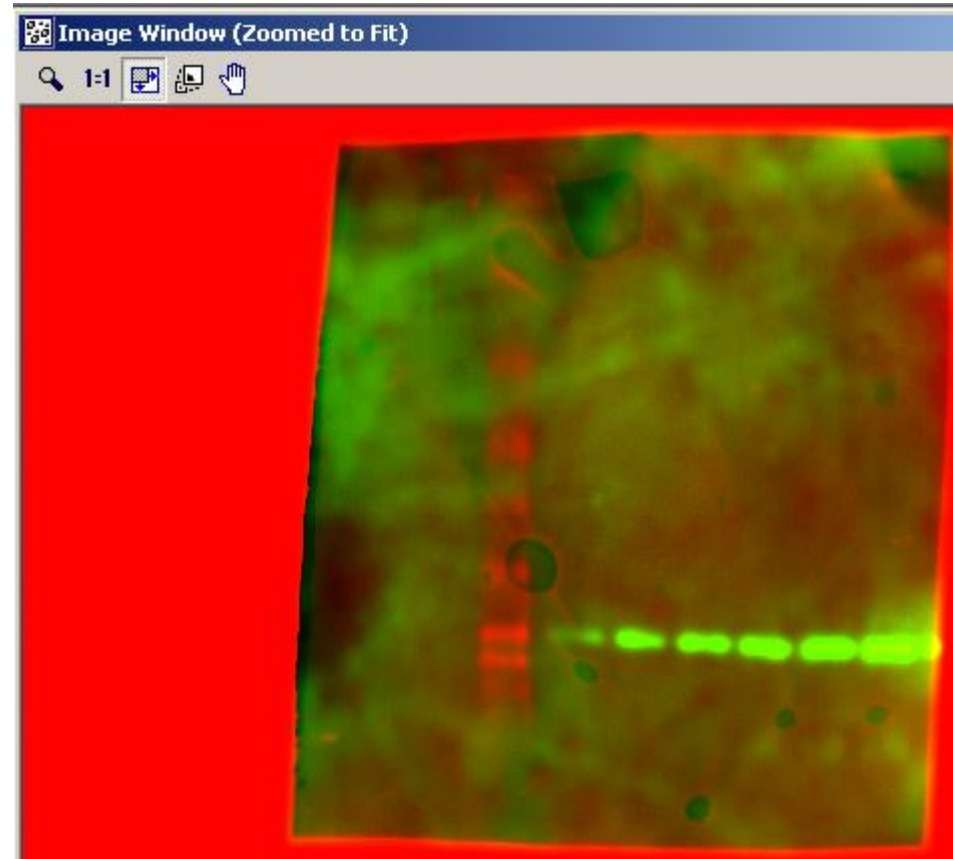
2. Select up to 4 image files to make up the multiplex image

Folder: D:\Documents and Settings\212033029\Desktop\ecL overlay

Notes: a) Images must be in the same folder
b) Images must already be aligned and the same size

3. Your multiplex image file will be created in the image folder

Select "create"



Multiplexed image displayed



imagination at work